

# Alice Hargrave

## *The Conference of the Lakes, After Farid Attar*

2020-2021

Installation of 20 lake portraits made in collaboration with Dr. Catherine O'Reilly

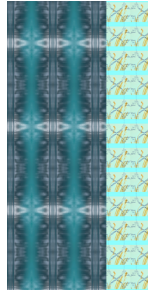
Solvent prints on fabric

Courtesy of the artist

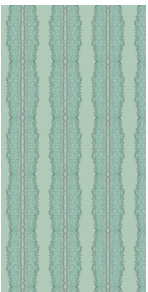
starting from window:



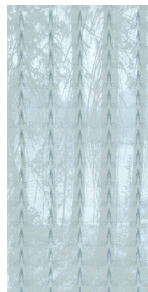
*Lake Baikal, Russia, warming*



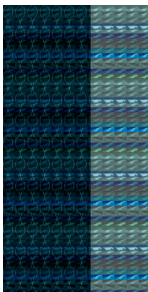
*Lake Zigadenus, Canada, decreasing turbidity, "Losing Blue"*



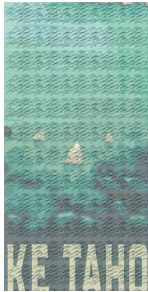
*Lake Tanganyika, Tanzania, warming, fish loss*



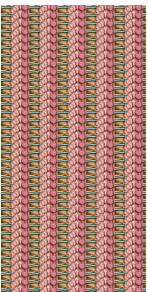
*The Loch & Sky Pond, Colorado, USA, atmospheric nitrogen deposition*



*Lake Vanda, Antarctica, growing lake, ice melt*



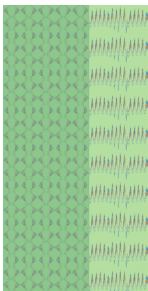
*Lake Tahoe, USA, decreasing clarity*



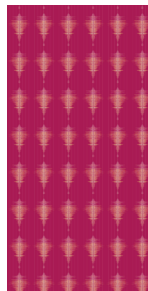
*Lake Hillier, Australia, genome of *S. ruber*, pink lake*



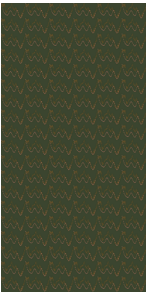
*Lake Otsego, NY, USA, warming, invasive species*



*Lake Tovel, Italy, warming*



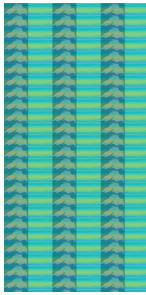
*Lake Tovel, Italy, magenta algal bloom loss*



Northern WI Lakes, USA,  
mercury



Lake Thingvallavatn, Iceland, ice loss, finger  
rafting



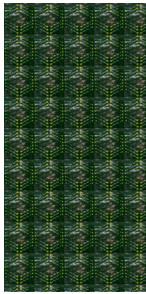
Lake Superior, USA, ice loss



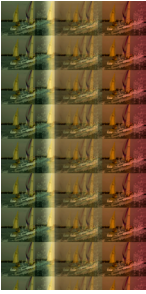
Lake Blavatn, Iceland, new lake, glacier  
extinction



Lake Abiyata, Ethiopia,  
shrinking lake, habitat loss



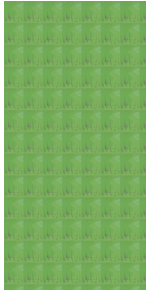
Lake Escanaba, WI, USA, phenological  
whiplash



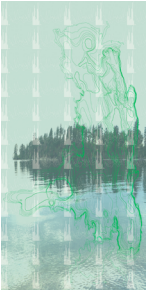
Lakes Mendota, Menona, and  
Wingra, WI, USA, rising salinity



El Morado Pro Glacial Lake, Chile, new lake



Lake Milford, KS, USA, toxic  
algal blooms



Flathead Lake, MT, USA, invasive species and  
mercury in the food chain



Access project descriptions and resources on  
the exhibition page.