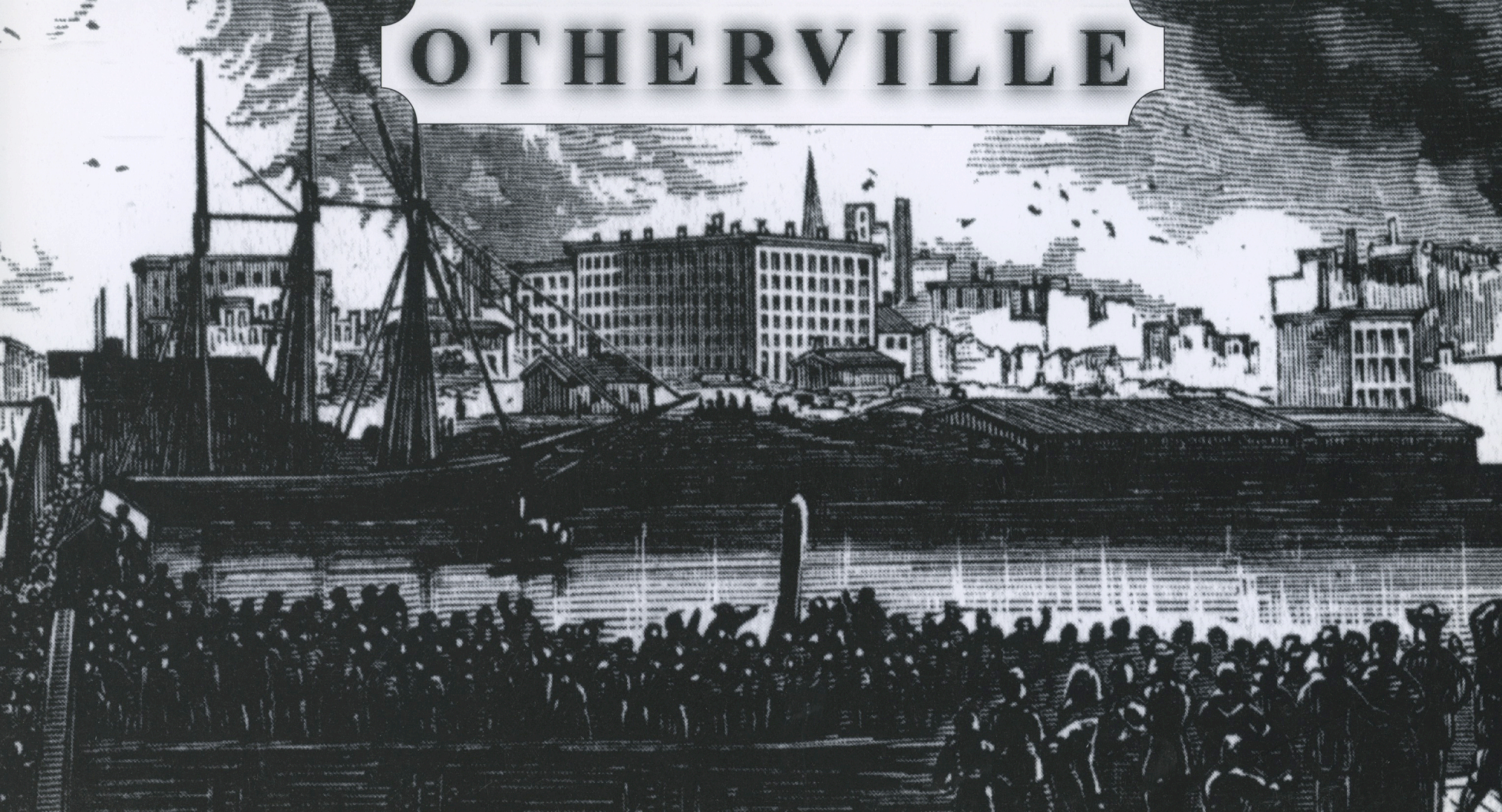
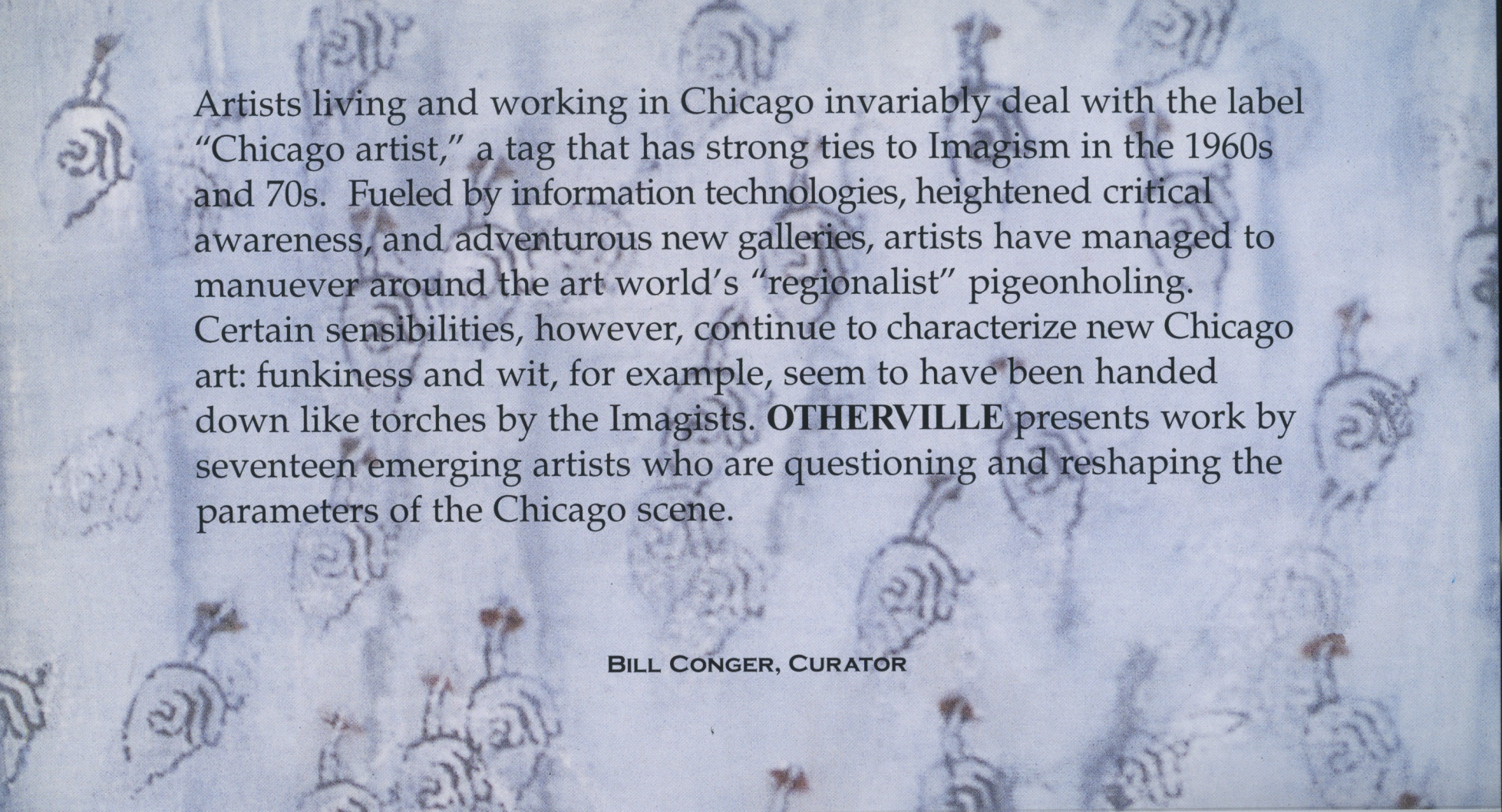


# OTHERVILLE





Artists living and working in Chicago invariably deal with the label “Chicago artist,” a tag that has strong ties to Imagism in the 1960s and 70s. Fueled by information technologies, heightened critical awareness, and adventurous new galleries, artists have managed to maneuver around the art world’s “regionalist” pigeonholing. Certain sensibilities, however, continue to characterize new Chicago art: funkiness and wit, for example, seem to have been handed down like torches by the Imagists. **OTHEVILLE** presents work by seventeen emerging artists who are questioning and reshaping the parameters of the Chicago scene.

**BILL CONGER, CURATOR**



Cover image: *Chicago in Flames*, Bureau of Illustrations, Buffalo.

Above: Shona Macdonald, *Shhhh Painting #1* (screened detail), 1997. Silkscreen, oil, wax, and pencil on canvas, 9 1/2 x 10 inches. Courtesy of Fassbender Gallery.

Below: John Arndt, *Bone*, 1997-8. Acrylic on wood, 3 x 17 x 14 inches. Courtesy of Ten in One Gallery.

Left: Alison Ruttan, *Praline Surprise*, 1997. Digitally enhanced photograph, 34 x 42 inches. Courtesy of Beret International.

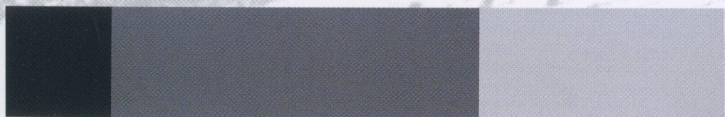


Right: Michael McCaffrey, *Untitled*, 1996-7.  
Enamel on masonite and plywood, 52 1/2 x 43  
inches.

Below: Stephanie Brooks, *Opinion Polls: 16%  
Believe, 90% Undecided*, 1998. Enamel on aluminum,  
3 1/2 x 22 x 2 inches. Courtesy of Ten in One Gallery.

Verso: Tom Denlinger, *Untitled* (screened detail),  
1998. C-print, 24 x 30 x 1 3/4 inches. Courtesy of  
Ten in One Gallery.

Background image: screened detail of Chicago being  
rebuilt. Courtesy of the Chicago Historical Society.



# OTHERVILLE

JOHN ARNDT, STEPHANIE BROOKS, TIMOTHY BROWER,  
TOM DENLINGER, JOSH GARBER, ALICE HARGRAVE, PAUL KASS, CHENOAE KIM,  
MICHAEL LINDELL, SHONA MACDONALD, PAMELA STAKER-MATSON,  
MICHAEL McCAFFREY, PATRICK MCGEE, ALISON RUTTAN,  
ANGELA SCHLAUD, MIKE SLATTERY, ROB WEINGART

UNIVERSITY GALLERIES

ILLINOIS STATE UNIVERSITY

MARCH 2 THROUGH APRIL 4, 1999

OPENING RECEPTION: TUESDAY, MARCH 2 AT 7:00 PM

University Galleries  
Illinois State University  
110 Center for the Visual Arts  
Campus Box 5620  
Normal, Illinois 61790-5620

[www.orat.ilstu.edu/cfa/galleries](http://www.orat.ilstu.edu/cfa/galleries)  
email - [galleries@ilstu.edu](mailto:galleries@ilstu.edu)  
ph. - 309.438.5487  
fax - 309.438.5161



Non-Profit  
Org.  
U.S. Postage  
Paid

Saturday-Monday 12:00-4:00  
Tuesday 9:30-9:00  
Wednesday-Friday 9:30-4:30

Parking info: 438-PARK