



Picture This, a new program for 2011-2012

Working with more than a dozen regional schools and community organizations, University Galleries' *Picture This* helps youth visualize our community through contemporary practices in photography. A year-long project culminating in a major exhibition of youth-created photographs, *Picture This* is designed as a cyclical learning experience. The project affords middle and high school students access to exhibitions at University Galleries, provides classroom instruction in their schools, and offers students an opportunity to demonstrate what they have learned by bringing them back to University Galleries for their own group exhibition in May 2012.

Contact University Galleries if your school or organization would like to become involved in this project.

Picture This is made possible through the generous support of the Illinois Prairie Community Foundation—Mirza Arts and Culture Fund.



University Galleries of Illinois State University has developed a multivalent approach to exhibitions and support for artists. Our program comprises rings of access that extend outward from the exhibitions we create and travel, the books we publish, and the tours, performances, lectures, and outreach programs we provide. Our exhibitions feature both emerging and established artists, often those whose work has not been previously presented in a comprehensive manner. University Galleries has organized museum surveys of works by: Jim Lutes, Nadia Hotait, Jason Lazarus, Michelle Grabner, Tony Tasset, Stephanie Brooks, Allan Sekula, Jeanne Dunning, Siebren Versteeg, Martin Wong, David Wojnarowicz, Jane Dickson, and many others.

University Galleries is open year-round: daily throughout the academic year and Monday-Saturday during the summer. All exhibitions and events are free and open to the general public.

Please call 309.438.5487 to schedule a special tour for your class or community group.

www.cfa.ilstu.edu/galleries
www.facebook.com/UniversityGalleries

illinois state university
university galleries
 college of fine arts

110 center for the visual arts
 campus box 5600
 normal, il 61790-5600
 tel 309.438.5487
www.cfa.ilstu.edu/galleries
gallery@ilstu.edu

saturday-monday 12:00-4:00
 tuesday 9:30-7:00
 wednesday-friday 9:30-4:30

summer hours
 monday 12:00-4:00
 tuesday 12:00-7:00
 wednesday-saturday 12:00-4:00

This document is available in alternative formats upon request. If you need a special accommodation to fully participate in any of our programs, call 309.438.5487. Please allow sufficient time to arrange the accommodation.

illinois state university
university galleries
 college of fine arts



2011 • 2012 exhibitions



May 23 - Aug 7, 2011



Magnificent Menagerie

Co-organized with Illinois State University's Circus & Allied Arts Collection, the Gamma Phi Circus, the Valentine Family, and artists Danell Dvorak and Glen C. Davies, this exhibition celebrates the artistry and history of circus. Special performances by Gamma Phi Circus and others.

reception: Sat • July 30 • 2 to 6 pm



Aug 16 - Oct 16, 2011



The Truth is Not in the Mirror: Photography and a Constructed Identity

Featuring work by Dawoud Bey, Rineke Dijkstra, Thomas Ruff, Alec Soth, Mickalene Thomas, and 18 others, this exhibition explores the nature of portraits and portraiture in contemporary photography. Organized by the Haggerty Museum, Marquette University.

tour by Wally Mason, exhibition curator:
Sat • Aug 27 • 2 to 2:45 pm
reception: Sat • Aug 27 • 3 to 5 pm



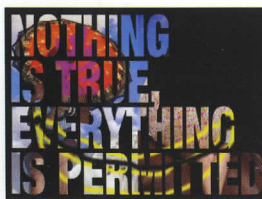
Aug 16 - Oct 23, 2011



When Your Leg Spends the Night in the Water: Adventures From the Northeast

Work by 13 artists at the University of Massachusetts, Amherst, completing the exchange of MFA student work between ISU and UMass.

reception: Sat • Aug 27 • 3 to 5 pm



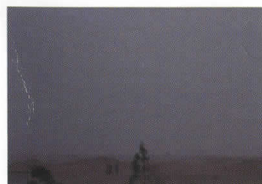
Aug 16 - Oct 23, 2011



Josué Pellot and Héctor Arce-Espasas: Nothing Is True, Everything is Permitted

Through individual and collaborative works, Arce-Espasas and Pellot embed the tropical color and festive imagery of their native Puerto Rico with a critique of tourism's myth of Paradise, a modern manifestation of colonialism.

reception: Sat • Aug 27 • 3 to 5 pm
artists' talk: TBA



Oct 29 - Dec 18, 2011



Irena Knezevic: Here Comes the Darkness

Knezevic's multi-media, multi-room installation creates a typology of ruin through landscape and personal witness, establishing aesthetic and conceptually formal connections between the war-devastated terrain of Iraq, her native Serbia, and the consumer-driven decline of landscapes in the U.S.

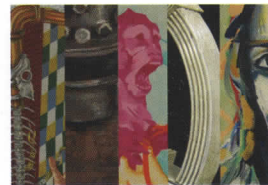
performance/lecture: Sat • Oct 29 • 4pm
reception: Sat • Oct 29 • 5 to 7 pm



Oct 29 - Dec 18, 2011



Oct 29 - Dec 18, 2011



Oct 29 - Dec 2, 2011



FACULTY BIENNIAL 12

Jan 17 - Feb 19, 2012



Jan 17 - Feb 19, 2012



Todd DeVriese

Featuring a selection of works on paper by alumnus DeVriese (1960-2010), this memorial exhibition also includes reflections by his students, mentors, and collaborators. Organized by Normal Editions Workshop.

reception: Sat • Oct 29 • 5 to 7 pm

Uwe Jonas

Visiting artist Uwe Jonas exhibits recent works on paper, created prior to and during his residency in the School of Art at ISU.

artist talk: Tues • Oct 25 • 12 pm
reception: Sat • Oct 29 • 5 to 7 pm

Art Education Student Exhibition

Work by Art Education students at ISU who completed or will complete requirements for certification between Fall 2010 and Spring 2012. Coincides with the Illinois Art Education Association Conference, November 10-12, held this year in Normal.

reception: Sat • Oct 29 • 5 to 7 pm

Faculty Biennial

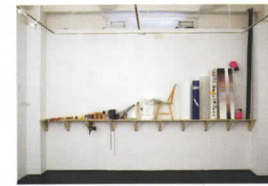
A multiplicity of work by current studio, art education, and graphic design faculty in the School of Art.

reception: Tues • Feb 7 • 5 to 7 pm
faculty forum: TBA

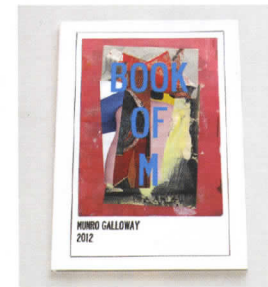
The Will to Believe in Something More

Selected from the ongoing image archive of Borderland Collective, these photographs by young people ages 8-20, are the result of collaborations between artists, youth, teachers, and families in the borderland region of Texas and the Native American lands of New Mexico. Curated by alumnus Jason Reed, Director of Borderland Collective.

artist talk: Tues • Feb 7 • 4 pm
reception: Tues • Feb 7 • 5 to 7 pm



Feb 28 - Apr 1, 2012



Feb 28 - Apr 1, 2012



Apr 10 - May 13, 2012



Apr 10 - May 13, 2012



Apr 28, 2012



An Experiment in Collectivity

For this artist-directed exhibition Daniel Bainbridge, Jennifer Gustavson, Melanie Hunter, Tim Kowalczyk, Colin Nesbit, and Beatrix Reinhardt respond to the space of University Galleries by creating installations on site.

reception: Sat • Mar 3 • 2 to 5 pm
artists' panel: TBA

Munro Galloway: Book of M

Visiting artist Munro Galloway seeks to expand the language of painting through collage, appropriation, ruptured narrative, and inexpensive print technology.

artist talk: Tues • Feb 28 • 12 pm
reception: Sat • Mar 3 • 2 to 5 pm

2012 Student Annual

Open to all ISU students, the Student Annual provides a forum for students to submit their work for review by professional artists, designers, critics, and curators.

studio art juror: Buzz Spector
reception: Tues • Apr 10 • 5 to 7 pm

Takeshi Moro

Photographer Takeshi Moro extracts pensive truths from simple gestures. Moro's visual meditations on ritual situate viewers within the prismatic light of personal experience and cultural expression.

reception: Tues • Apr 10 • 5 to 7 pm
artist talk: TBA

PostCard Art

An annual fundraising event sponsored by the Friends of the Arts to provide scholarships for College of Fine Arts students.

auction: Sat • Apr 28 • 6 to 10 pm